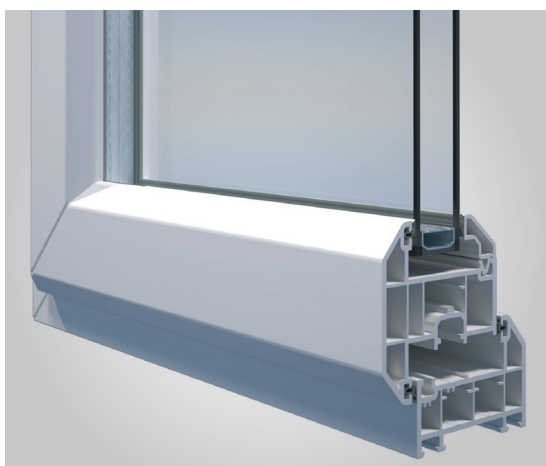


## TRADITIONAL 2500 WINDOW AND DOORS

### CUTTING EDGE

THE TRADITIONAL 2500 MULTI-FUNCTION WEATHERSEAL IS AT THE CUTTING EDGE OF MODERN DESIGN AND MATERIAL TECHNOLOGY



THE 2500  
SYSTEM IS  
TECHNICALLY  
ADVANCED  
WITH HIGH  
PERFORMANCE





---

# TRADITIONAL 2500

---

## WINDOW AND DOORS

---

deceuninck



# TRADITIONAL 2500

## CASEMENT INTERNALLY GLAZED

### FRAMING

- choice of two outer frame sizes (52mm, 70mm)
- choice of three transom/mullion sizes (68mm, 88mm, 110mm)

### SEALS/GASKETS

- main profiles supplied with high-performance integral multifunctional seal/gasket

### REINFORCING

- galvanised steel profiles optimised for strength and rigidity
- optional thermal chamber insulator (TCI) for enhanced thermal performance and screw retention

### WINDOW STYLES

- top hung, side hung and fixed light frames
- multilights combining above elements

### FABRICATION

- fully welded construction
- mechanically joined transoms/mullions

### GLAZING

- choice of four glazing bead styles
- glazing options from 5mm up to 42mm thickness
- Georgian bar
- glazing options from 5mm up to 42mm thickness
- Georgian bar

### ANCILLARIES

- frame extensions and cills
- lightweight and structural coupling members

### HARDWARE

- 17.5mm cavity depth
- 9mm sash cover
- 17mm rebate height

### SECURITY

- Kitemarked approved to PAS 24 enhanced security standard

### THERMAL INSULATION

- $U_w$  0.90 W/m<sup>2</sup>k
- WER C to A++

### ACOUSTIC PERFORMANCE

- $R_w$  (C; Ctr) 35 (-2; -5) dB
- $R_w$  (C; Ctr) 38 (-1; -4) dB
- $R_w$  (C; Ctr) 42 (-2; -3) dB

### DESIGN

- complements classical and contemporary architecture
- personalise with glazing bead options
- white colour RAL 9016
- many foil colour options available from stock
- Decoroc® colours and more foils on request

## SIZE LIMITATION AND PERFORMANCE CHARACTERISTICS

WINDOW TYPE	LENGTH (MM) - MAXIMUM	HEIGHT (MM) - MAXIMUM	PERIMETER (MM) - MAXIMUM	TRANSOM/MULLION LENGTH (MM) INC. FRAME - MAXIMUM	AIR PERMEABILITY CLASSIFICATION	WATER TIGHTNESS CLASSIFICATION	RESISTANCE TO WIND CLASSIFICATION	EXPOSURE CATEGORY AS GIVEN IN TABLE 1 OF BS 6375-1
-------------	--------------------------	--------------------------	-----------------------------	--------------------------------------------------------	------------------------------------	-----------------------------------	-----------------------------------------	----------------------------------------------------------

SASH DIMENSIONS FOR WINDOWS WITH APPROVED SASH PROFILES:

PROJECTING TOP HUNG	1200	1500	-	-	4	E1050	A5	2000
PROJECTING SIDE HUNG	900	1400	-	-	4	7A	A5	2000

OVERALL DIMENSIONS FOR WINDOWS WITH APPROVED OUTER FRAME PROFILES:

FIXED	3000	3000	8000	-	3	9A	A5	2000
-------	------	------	------	---	---	----	----	------

OVERALL DIMENSIONS FOR APPROVED OUTER FRAMES AND TRANSOM/MULLION PROFILES:

MULTI-LIGHT - STEEL TRANSOM/MULLION REINFORCEMENT	2400	2400	7600	1400	4	9A	A5	2000
---------------------------------------------------------	------	------	------	------	---	----	----	------

# TRADITIONAL 2500 CASEMENT VERTICAL SECTION

deceuninck



## TECHNICAL AND SPECIFICATION SUPPORT

Specification Support forms an essential link between architects, specifiers and approved Deceuninck fabricators and installers. The team provide informed guidance on the use of products, samples, drawings and specifications with contact maintained throughout each stage of a contract to completion.

Deceuninck can offer a technical design service for suitable schemes embracing:



- product selection and application
- technical review to confirm compliance with Building Regulations
- advice on exposure conditions
- wind load calculations
- framing construction and design solutions
- generation of scheme drawings for tendering purposes
- technical specification
- window samples for client/authority approval

