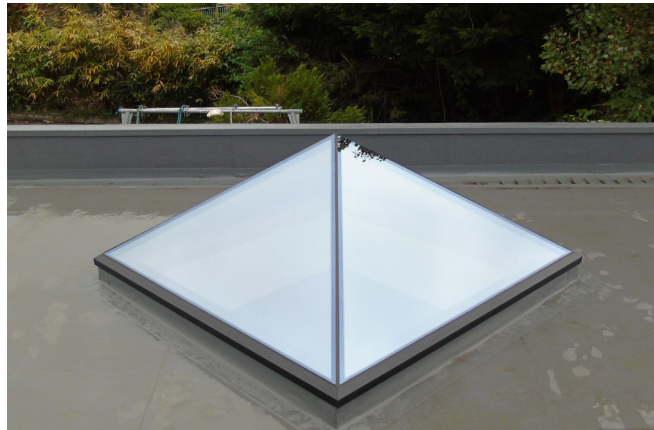




## Bespoke Rooflights



# Frameless Flat Rooflight

This is a unique flat Rooflight system that is ultra slim and aesthetically pleasing. It's contemporary style suits both a modern and period building to achieve a great look wherever it is situated. Performance of our Rooflight is industry leading in U values and weather durability which has been tested to make sure the product surpasses all current regulations and will stand the test of time. All our Rooflights are pitched at 5 degrees as an industry standard to ensure minimal pooling on the Rooflight. We only use top specification glass structurally calculated by our glass engineers to ensure safety and longevity of our products. All components used in the manufacture and installation are all designed and made in Britain. All of our Rooflights are hand made by highly trained staff who implement strict manufacturing guidelines & quality control to make sure our first is as good as our last.

## Specification

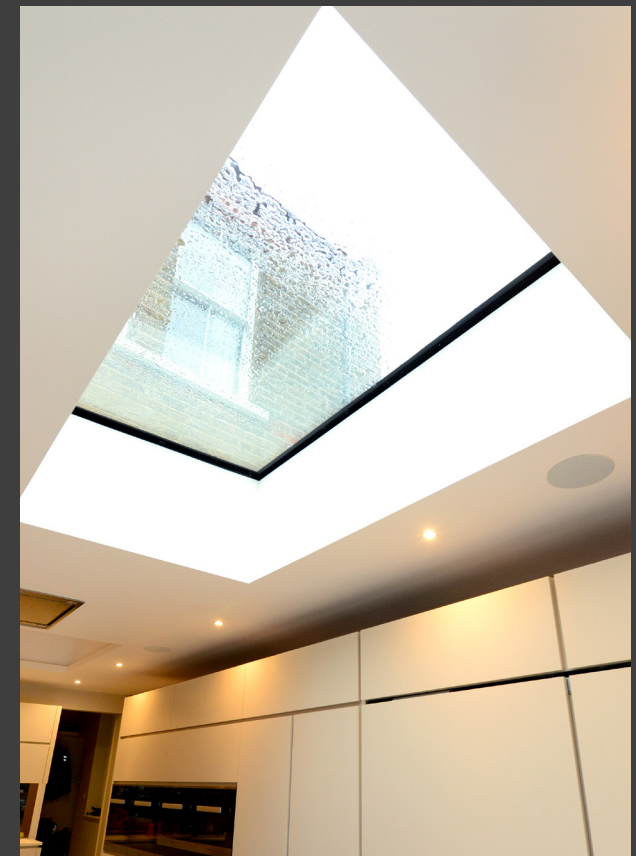
- Thermally broken aluminium comprising of 2 x 27mm polyamide inserts
- Finished in a tough and long lasting polyester powdercoated paint
- 48mm overhang for a better weather tight seal
- Available in RAL colour 7015m / 7016m / 9005m
- Extruded frame can accommodate from 20mm - 44mm DGU, plus walk-on glass
- All sizes are made to measure

## Glass

Pilkington Optiwhite™ K Glass

Pilkington Optiwhite™ Active Blue

Pilkington Optiwhite™ Active SunShade Neutral





Minimum fall = 5 degrees.

Maximum fall = 25 degrees.

Total width upstand width  
not to exceed 70mm.

Glass structurally bonded to frame.

4 sided Thermally broken frame.

Frame bedded onto structure with  
appropriate sealant.

Required dimension.

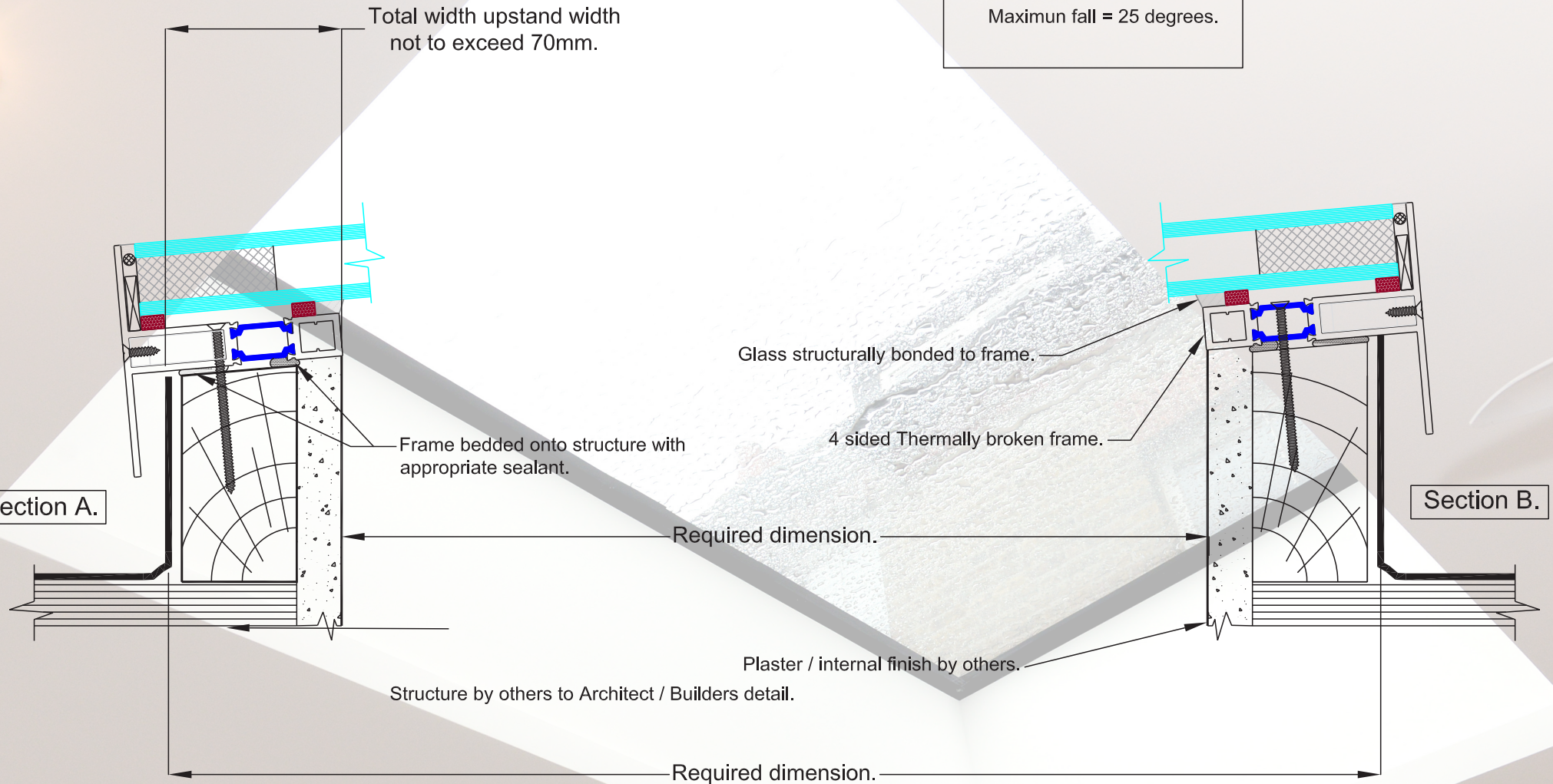
Plaster / internal finish by others.

Structure by others to Architect / Builders detail.

Required dimension.

Section A.

Section B.









# Frameless Opening Rooflight

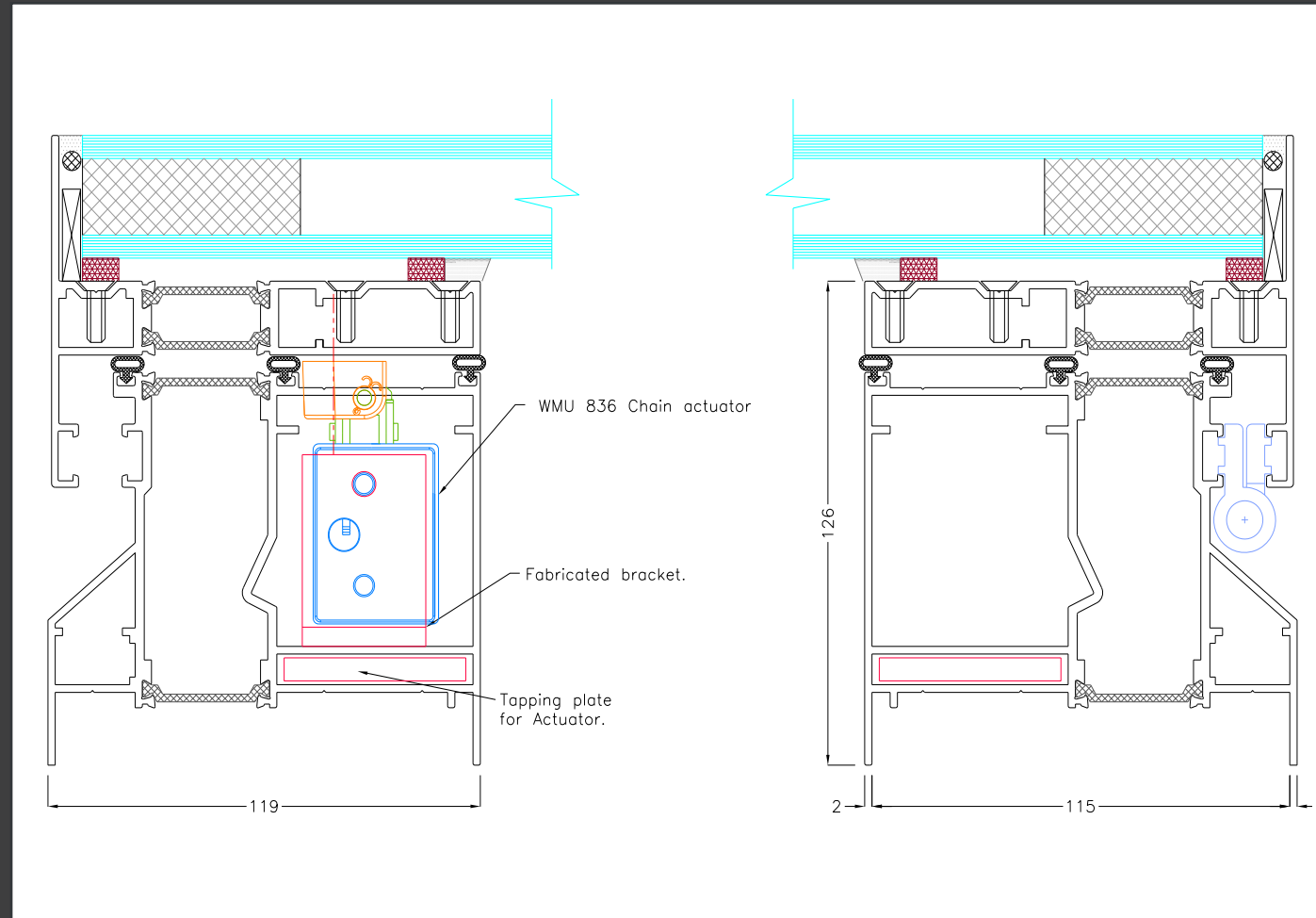
Introducing our new Frameless Electric Opening Rooflight boasting a thermal break on both outer-frame and sash. With larger 35mm quad polyamide inserts for unbeatable thermal quality, this will be one of the most attractive and thermally efficient Frameless Opening Rooflights on the market to date. With an overall depth of 165mm and a back to front measurement of 119mm, houses an electric chain actuator that can be switch controlled or wireless application can be achieved. More importantly weather plays a big role when it comes to the design of the product that's why we have designed our industry leading triple seal gasket system that is sure to keep weather out even in the harshest of conditions.

## Specification

- Electric Opening of 400mm
- 4 x 35mm Polyamide inserts
- Triple Seal Gasket System
- Available in RAL 7015m/7016m/9005m
- Glass Specs - 6/18/6 or 6/20/4
- Double Glazed or Triple Glazed option
- Thermally Broken Aluminium
- Includes Wireless remote control
- Rain Sensor also available

## Glass

Pilkington Optiwhite™ K Glass  
Pilkington Optiwhite™ Active Blue  
Pilkington Optiwhite™ Active SunShade Neutral





# Frameless Roof Lantern & Pyramid

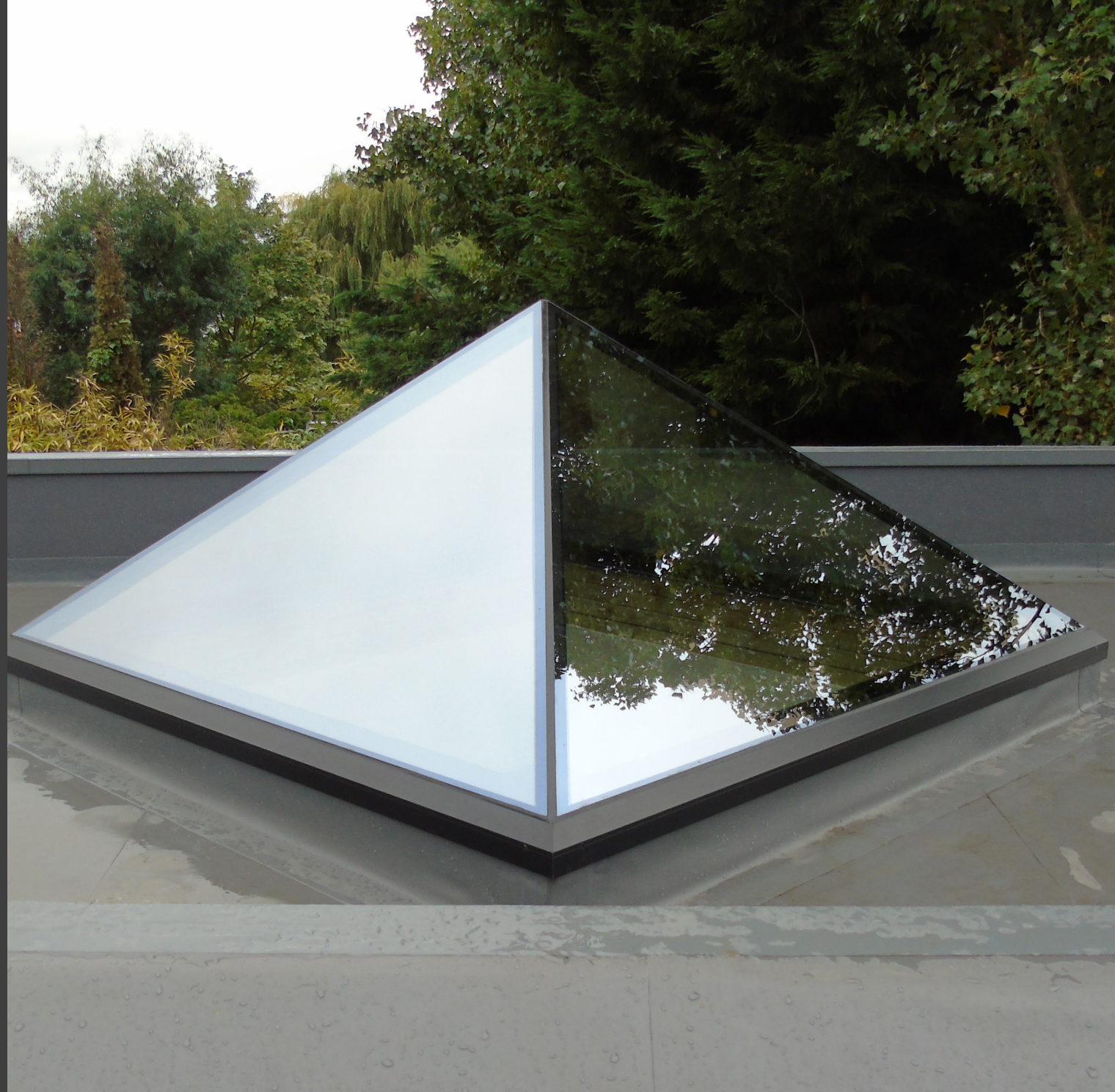
The Ultra-modern Pyramid is one of the slimmest designs on the market today, providing more light transmittance than any other pyramid on the market. Traditionally, other companies use bars which makes them bulky and obtrusive and U values are also effected making ours more efficient and aesthetically pleasing. Consisting of glass to glass joins with thermal foam barrier using a glass of just 1.2 U value the product will keep you warm even in the harshest of conditions.

## Specification

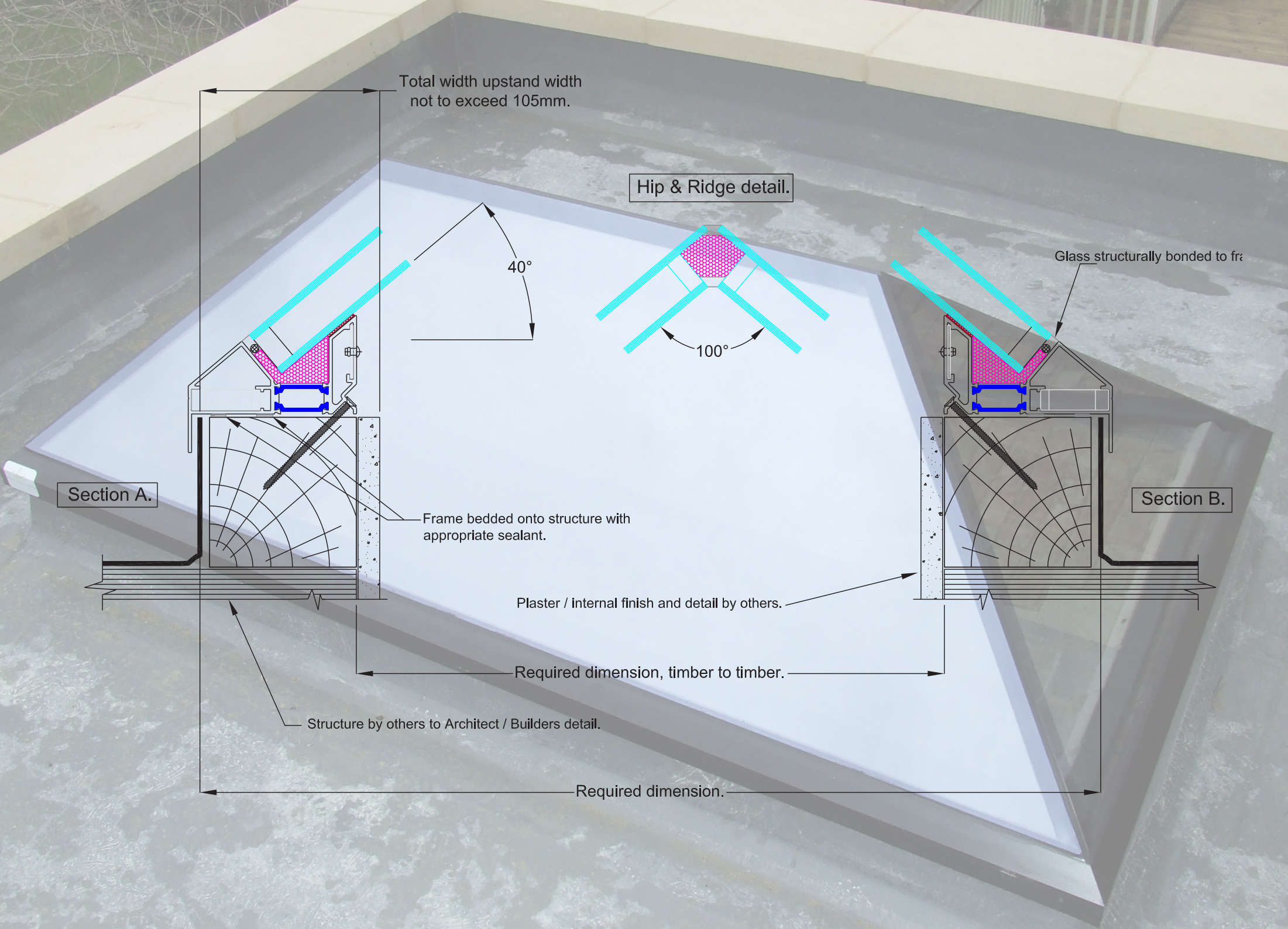
- Thermally broken aluminium comprising of 2 x 32mm polyamide inserts
- Finished in a tough and long lasting polyester powdercoated paint
- 23mm overhang for a better weather tight seal
- Available in RAL 7015m / 7016m / 9005m
- Ultra Slim Frame
- Glass spec is 4 / 22 / 4 heat soaked toughened glass
- Solar reflective self cleaning glass
- Sleek glass to glass joins
- All size are made to measure

## Glass

Pilkington Optiwhite™ K Glass  
Pilkington Optiwhite™ Active Blue  
Pilkington Optiwhite™ Active SunShade Neutral







Total width upstand width  
not to exceed 105mm.

Hip & Ridge detail.

40°

100°

Glass structurally bonded to frame

Section A.

Section B.

Frame bedded onto structure with  
appropriate sealant.

Plaster / internal finish and detail by others.

Required dimension, timber to timber.

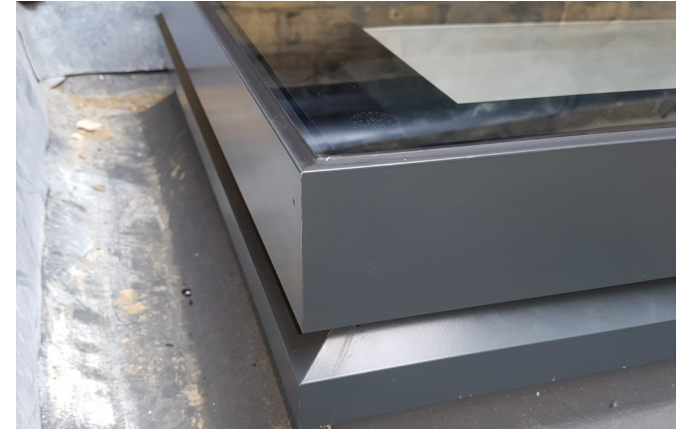
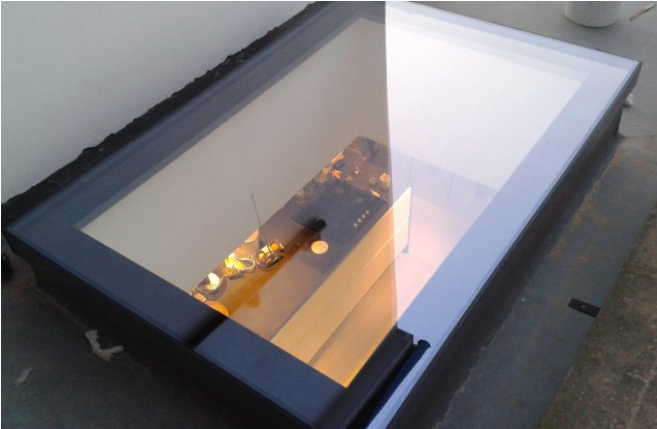
Structure by others to Architect / Builders detail.

Required dimension.





## Bespoke Rooflights



At Perfect Crystal Windows Ltd, we can guarantee professional and high quality installations, made to measure products and honest advice to help you find the perfect match for your property and to your exact specifications.

Perfect Crystal Windows Ltd  
1 Cumberland Avenue  
Park Royal  
London  
NW10 7RX

Tel: 0208 961 6111  
Email: [info@perfectcrystal.co.uk](mailto:info@perfectcrystal.co.uk)  
[www.perfectcrystal.co.uk](http://www.perfectcrystal.co.uk)